

Mas

146  
2

SI4D  
34/36

78  
37

1016

110 KV

IS4D  
38/40

82  
87

1026

SI4D  
28/30

83  
69

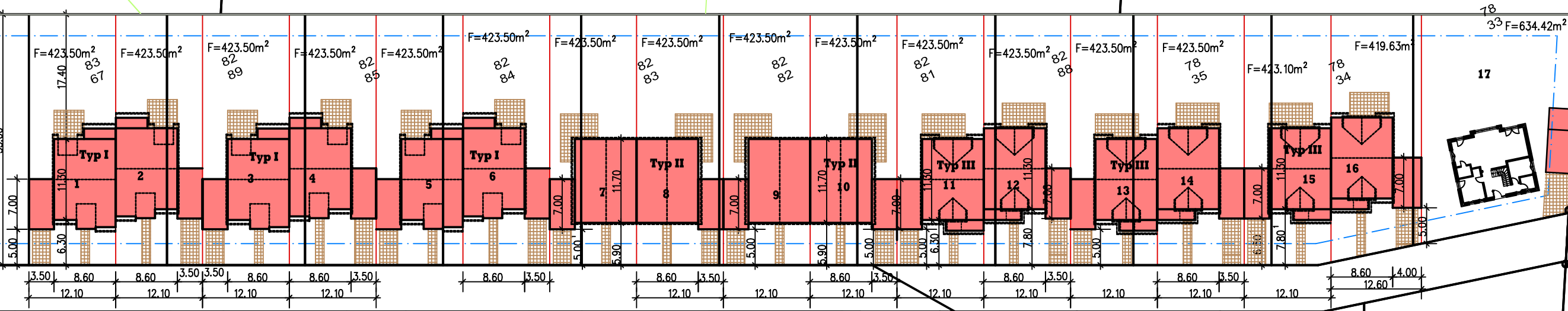
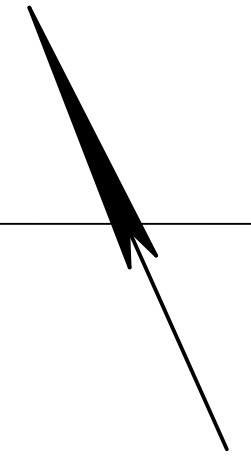
# Dannenbüttel "Maschgartenberg II" M 1:600

## 8 Doppelhäuser / 1 Einfamilienhaus - 150m<sup>2</sup>-160m<sup>2</sup> je Wohneinheit

10x5

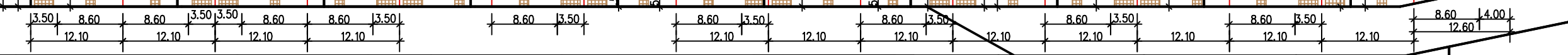
014

83  
65



17  
3<sup>3</sup> F=634.42m<sup>2</sup>

5



Flüderweg

Maschgartenberg